

# Blanking made easy



DIE-CUTTING | FOLDING CARTON

NOVACUT 106 ER

At a glance



# Empowering flexibility

Isn't in-line blank separation expensive and difficult, requiring costly equipment, all-new tooling and lots of experience? Well, not anymore, because **NOVACUT 106 ER** brings you superb BOBST technology with our range of tooling solutions and our extensive process support network. Your **NOVACUT 106 ER** will position you perfectly to minimize work in progress, reduce costs and so improve the productivity of your entire conversion operation.

## NOVACUT 106 ER

- > At a glance
- > Packaging market
- > Benefits and features
  - > 1 – 3
  - > 4 – 6
- > Specifications
  - > Measurements
  - > Technical information
- > Related products
- > Services
  - > General services
  - > Connected Services
  - > Tooling



Cutting, stripping and blanking **in one go**

**Unique technology**  
made affordable

**Profitable,**  
reliable, long lasting

> WATCH VIDEO

REQUEST  
CONSULTING

Print responsibly

Data is not binding.  
Non-contractual pictures.  
The manufacturer reserves  
the right to make  
modifications without notice.  
© BOBST SA 2021  
BUPC\_NCT106ER\_EN\_0521

# Creating value

**BOBST innovations**  
are driven by customer  
and brand owner needs.

[> READ MORE](#)

## Functional packaging and protection

Protecting the goods in a clever way is required. Single serve, multi-packs, re-sealable, see-through.

## Customization, versioning, personalization

Packaging needs to reach all segments of the society taking almost any shape and size from very short runs to reprint and long runs. All with the best color consistency.

## E-commerce & omni-channels

Multiple retail formats set new requirements for packaging. On-demand production, timely delivery across multiple designs, shapes and sizes.

## Sustainability

Packaging production needs to reduce its environmental carbon footprint – less waste across the entire supply chain. New and thinner substrates. Recycling and re-use are the new rules.

## Faster time-to-market

A growing number of products need to reach consumers faster. Product lifetime is shorter. From product design to the consumer experience, the supply chain has to be more agile.



## NOVACUT 106 ER

- > At a glance
- > Packaging market
- > Benefits and features
  - > 1 – 3
  - > 4 – 6
- > Specifications
  - > Measurements
  - > Technical information
- > Related products
- > Services
  - > General services
  - > Connected Services
  - > Tooling

Print responsibly

Data is not binding.  
Non-contractual pictures.  
The manufacturer reserves  
the right to make  
modifications without notice.  
© BOBST SA 2021  
BUPC\_NCT106ER\_EN\_0521



Perfect sheet feeding

### Feeder

- Pull or push sheet registration system allowing precise sheet register
- Optional non-stop feeder optimizes the machine's net output
- Designed to ensure smooth sheet introduction, lateral ramps aid consistent feeding



Precise register

### ACCUREGISTER

- Optional "No sheet-edge contact" system guaranteeing perfect register quality
- Large correction range in front and lateral direction
- Higher machine performance by reducing feed related production stops
- Less waste during set up and production




User friendly

### Advanced HMI SPHERE

- Large 22" full color Human Machine Interface (HMI)
- Simple step-by-step procedure guides the operator through the job set-up process
- All settings appear on one screen for more convenient and intuitive navigation

### NOVACUT 106 ER

- > At a glance
- > Packaging market
- > Benefits and features
  - > 1 – 3
  - > 4 – 6
- > Specifications
  - > Measurements
  - > Technical information
- > Related products
- > Services
  - > General services
  - > Connected Services
  - > Tooling

 Print responsibly

Data is not binding.  
Non-contractual pictures.  
The manufacturer reserves  
the right to make  
modifications without notice.  
© BOBST SA 2021  
BUPC\_NCT106ER\_EN\_0521





### Precision and speed

#### Perfect in-line stripping

- Even delicate or light materials are stripped perfectly at high speed
- Automatic locking and unlocking of upper stripping tools
- Quick Lock frame for central stripping board ensures fast job changeovers
- Dial indicators for tooling adjustment guarantee most precise stripping

#### AUTOPLATEN®

- Smoothest sheet acceleration drastically limiting number and size of nicks
- Automatic equipment centering, locking for chase and supporting plate ensure perfect cutting and creasing quality
- Motorized cutting force adjustment on demand



### Stressless changeovers

#### CENTERLINE® system

- Quick and easy fitting of dedicated tools into the machine
- Dial indicators allow accurate tool positioning, ideal for job repetitions
- Efficient and cost-effective management of short runs
- Perfect tool centering accuracy with CENTERLINE®



### Flexibility

#### Perfect piling and stacking

- Automatic non-stop delivery allowing continuous production
- Fully automatic sheet inserter provides perfectly stable blank stacking of counted batches
- Automatic Quick Lock system for the upper tool integrated in the machine

#### NOVACUT 106 ER

- > At a glance
- > Packaging market
- > Benefits and features
  - > 1 – 3
  - > 4 – 6
- > Specifications
  - > Measurements
  - > Technical information
- > Related products
- > Services
  - > General services
  - > Connected Services
  - > Tooling

 Print responsibly

Data is not binding.  
Non-contractual pictures.  
The manufacturer reserves  
the right to make  
modifications without notice.  
© BOBST SA 2021  
BUPC\_NCT106ER\_EN\_0521

### NOVACUT 106 ER

- > At a glance
- > Packaging market
- > Benefits and features
  - > 1 – 3
  - > 4 – 6
- > Specifications
  - > Measurements
  - > Technical information
- > Related products
- > Services
  - > General services
  - > Connected Services
  - > Tooling



<b>1</b>		
	3.00 m	9.84 ft*
<b>2</b>		
	9.10 m	29.85 ft*
<b>3</b>		
	6.80 m	22 ft*

\*Values may vary according to the configuration.

Print responsibly

Data is not binding.  
Non-contractual pictures.  
The manufacturer reserves  
the right to make  
modifications without notice.  
© BOBST SA 2021  
BUPC\_NCT106ER\_EN\_0521

### Convertible stock NOVACUT 106 ER

Paper, min.	80 g/m <sup>2</sup>	.004 in
Carton or solid board, up to	2,000 g/m <sup>2</sup>	.060 in
Corrugated board, up to	4 mm	.160 in

### Capability

Sheet size, max.	1,060 x 760 mm	41.73 x 29.92 in
Sheet size, min.	400 x 350 mm	15.75 x 13.78 in
Production speed, up to	7,000 s/h	7,000 s/h
with speed upgrade option	8,000 s/h	8,000 s/h
Cutting force, up to	2.6 MN	286 US ton

### Die-cutting

With gripper margin, max.	1,060 x 746 mm	41.73 x 29.37 in
Embossing size, max.	1,060 x 730 mm	41.73 x 28.74 in
Gripper margin	9 - 17 mm	.35 - .67 in
Height of cutting rules	23.8 mm	.94 in

### Pile height

Feeder, max.	1,820 mm	71.65 in
Feeder, max. with non-stop, manual	1,520 mm	59.84 in
Delivery, max.	1,550 mm	61.02 in

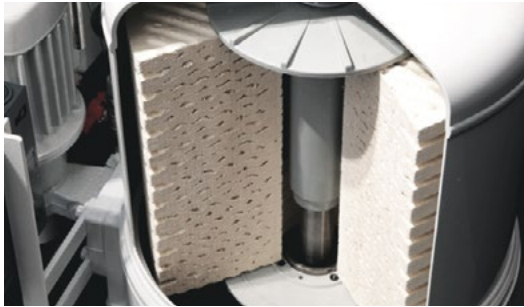
### NOVACUT 106 ER

- > At a glance
- > Packaging market
- > Benefits and features
  - > 1 – 3
  - > 4 – 6
- > Specifications
  - > Measurements
  - > Technical information
- > Related products
- > Services
  - > General services
  - > Connected Services
  - > Tooling

**REQUEST  
CONSULTING**

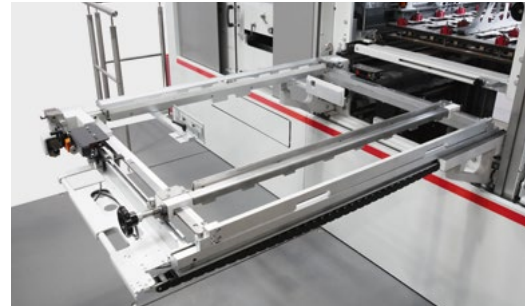
 Print responsibly

Data is not binding.  
Non-contractual pictures.  
The manufacturer reserves  
the right to make  
modifications without notice.  
© BOBST SA 2021  
BUPC\_NCT106ER\_EN\_0521



### Oil Cleaner

The revolutionary Oil Cleaner filtration device allows you to maximise the service life of your oil and also protect the planet, whilst reducing your maintenance costs.



### Full sheet delivery system with vibrators

Designed for in-plant flexibility, the system allows you to build up a portfolio of blank separating work while you still can run unblanked jobs that are simply die-cut and stripped.



### SAMPLING DEVICE

The ingenious device delivers an automated sampling sheet during production, permitting permanent quality control, and ensures impeccable finished product quality.



### DIGITAL INSPECTION TABLE 106

- Easy quality control of printed sheets, proofs, die-cut and embellished blanks
- Optional back light for specific quality control of embellished surfaces
- Quality check of embossing, including Braille
- Reduces risk of product recalls and quality cost

### NOVACUT 106 ER

- > At a glance
- > Packaging market
- > Benefits and features
  - > 1 – 3
  - > 4 – 6
- > Specifications
  - > Measurements
  - > Technical information
- > Related products
- > Services
  - > General services
  - > Connected Services
  - > Tooling

 Print responsibly

Data is not binding.  
Non-contractual pictures.  
The manufacturer reserves the right to make modifications without notice.  
© BOBST SA 2021  
BUPC\_NCT106ER\_EN\_0521



# Maintaining excellence

Expert services for all your equipment.  
Improve your processes, boost your productivity  
and enhance your expertise with a complete range  
of services from BOBST.



## Maintenance Plus

- Scheduled maintenance with BOBST certified technicians
- Preventative intervention, maximizing machine uptime
- Optimum performance over the equipment lifetime

[> WATCH VIDEO](#)

## Approved parts and logistics

- BOBST Original and Certified parts, and consumables
- Quality assurance, and extended maintenance intervals
- Worldwide distribution, and full availability where and when you need it

[> LEARN MORE](#)

## Machine upgrades

- Additional features, configured for your machine
- Enhanced functionality, connectivity and capability
- Future-proofing your investment, maintaining competitive advantage

[> LEARN MORE](#)

## NOVACUT 106 ER

- > At a glance
- > Packaging market
- > Benefits and features
  - > 1 – 3
  - > 4 – 6
- > Specifications
  - > Measurements
  - > Technical information
- > Related products
- > Services
  - > General services
  - > Connected Services
  - > Tooling

 [Print responsibly](#)

Data is not binding.  
Non-contractual pictures.  
The manufacturer reserves  
the right to make  
modifications without notice.  
© BOBST SA 2021  
BUPC\_NCT106ER\_EN\_0521

# Switch on digital transformation

BOBST Connected Services ensures your business is ready for the changing world of digital manufacturing. Our range of apps and technical support brings full connectivity to your equipment and processes – providing you with a wealth of real-time data, analytical tools and expertise – helping you work smarter and more productively.



## Helpline Plus & Premium\*

- Remote access intervention, with BOBST technicians
- Expert support, eight hours a day, five days a week
- Maintain production, reduce callouts by 80%

## Helpline Plus & Premium\* AR

- Enhanced remote assistance with Augmented Reality
- Visual instructions right in front of you
- Available for internal use

\*24/7 support in selected areas.

## Connect Portal

- User friendly web portal containing equipment data, reports and analysis
- Access insights on the go with Mobile Portal from your smartphone

## Remote Monitoring

- Real-time production KPIs
- Alerts and notifications
- Enabling control and decision making

## Downtime Tracking

- Track downtime and understand the root causes
- Enabling continuous improvement in productivity MES / ERP interface
- Web-based API for simple equipment data interface
- Data link and ERP Interface protocols for on-site direct integration

[> WATCH VIDEO](#)

## NOVACUT 106 ER

- > At a glance
- > Packaging market
- > Benefits and features
  - > 1 – 3
  - > 4 – 6
- > Specifications
  - > Measurements
  - > Technical information
- > Related products
- > Services
  - > General services
  - > Connected Services
  - > Tooling

Print responsibly

Data is not binding.  
Non-contractual pictures.  
The manufacturer reserves the right to make modifications without notice.  
© BOBST SA 2021  
BUPC\_NCT106ER\_EN\_0521

# Full tooling process optimization

In this challenging market, great tooling provides the consistency that you and your customer need, from the first to the last box of an order. BOBST offers the most advanced tools and equipment for die-making and converting processes so you can exceed customer quality and turnaround expectations, all while maximizing uptime and profitability.



For more information on advanced tooling and die-making products, please contact our experts.

[> LEARN MORE](#)

## World-class die-cutting

- Forward thinking die-making equipment and software
- Shorter lead times without compromising quality
- Create exceptionally precise tooling for every converting process

## Certified Die-Makers

The Certified Die-Makers Program supports and promotes world-class local die-makers. Choosing a certified die-maker guarantees the best local tooling solutions, with BOBST supporting the ongoing innovation, digitalization and quality improvements of these specialists.



## Enhanced converting

- Industry-leading range of equipment
- Made for all cutting, stripping and blanking stations
- Shortens set-up and changeover times

## NOVACUT 106 ER

- > At a glance
- > Packaging market
- > Benefits and features
  - > 1 – 3
  - > 4 – 6
- > Specifications
  - > Measurements
  - > Technical information
- > Related products
- > Services
  - > General services
  - > Connected Services
  - > Tooling

 Print responsibly

Data is not binding.  
Non-contractual pictures.  
The manufacturer reserves the right to make modifications without notice.  
© BOBST SA 2021  
BUPC\_NCT106ER\_EN\_0521

# Blanking made easy

[WWW.BOBST.COM/NOVACUT-106-ER](http://WWW.BOBST.COM/NOVACUT-106-ER)



## NOVACUT 106 ER

- > At a glance
- > Packaging market
- > Benefits and features
  - > 1 – 3
  - > 4 – 6
- > Specifications
  - > Measurements
  - > Technical information
- > Related products
- > Services
  - > General services
  - > Connected Services
  - > Tooling

**REQUEST  
CONSULTING**

 Print responsibly

Data is not binding.  
Non-contractual pictures.  
The manufacturer reserves  
the right to make  
modifications without notice.  
© BOBST SA 2021  
BUPC\_NCT106ER\_EN\_0521