



Co-extrusion Blown Film Lines

3, 5, 7, 9 Layers & more

All for one and one for all 7-Layer lines
The answer to all your needs

Symmetric Structures
(for FFS, Pre-form Pouches, Lamination Films etc.)

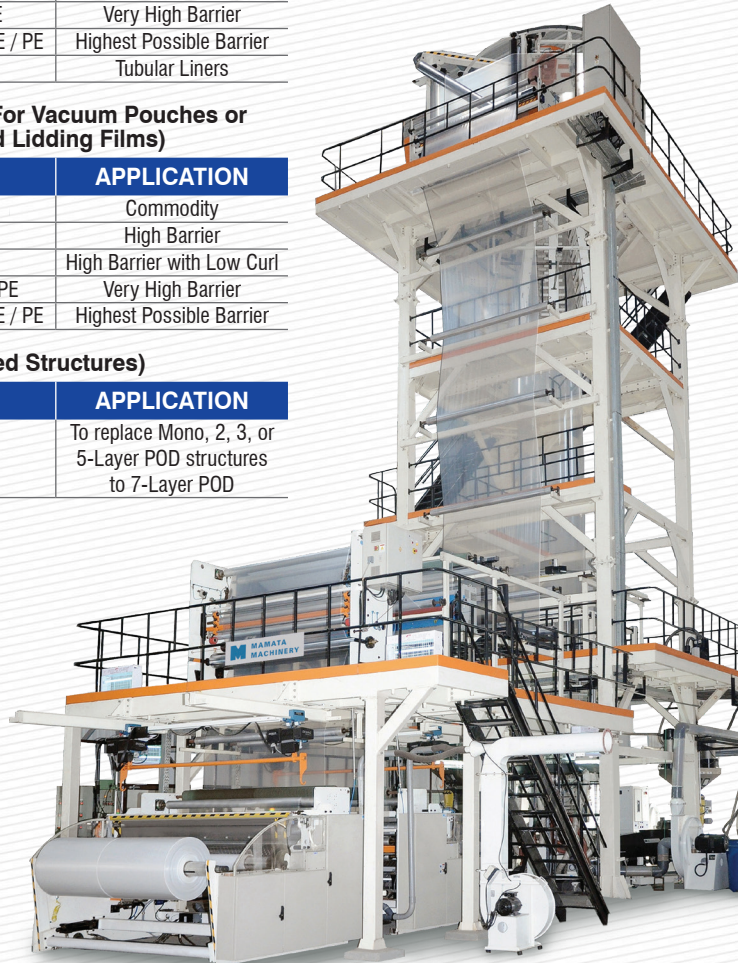
| STRUCTURE | APPLICATION |
|--|--------------------------|
| PE / PE / TIE / PA / TIE / PE / PE | Edible Oil |
| PE / PE / TIE / EVOH / TIE / PE / PE | High Barrier |
| PE / PE + White M.B. / TIE / EVOH / TIE / PE + Black M.B. / PE | UHT Milk |
| PE / TIE / PA / EVOH / PA / TIE / PE | Very High Barrier |
| PE / TIE / EVOH / PA / EVOH / TIE / PE | Highest Possible Barrier |
| PA / TIE / PE / PE / PE / TIE / PA | Tubular Liners |

Asymmetric Structures (For Vacuum Pouches or Thermoforming Trays and Lidding Films)

| STRUCTURE | APPLICATION |
|--|----------------------------|
| PA / TIE / PE / PE / PE / PE / PE | Commodity |
| PA / TIE / PA / TIE / PE / PE / PE | High Barrier |
| PA / TIE / PE / TIE / PA / TIE / PE | High Barrier with Low Curl |
| PA / TIE / PA / EVOH / PA / TIE / PE | Very High Barrier |
| PA / TIE / EVOH / PA / EVOH / TIE / PE | Highest Possible Barrier |

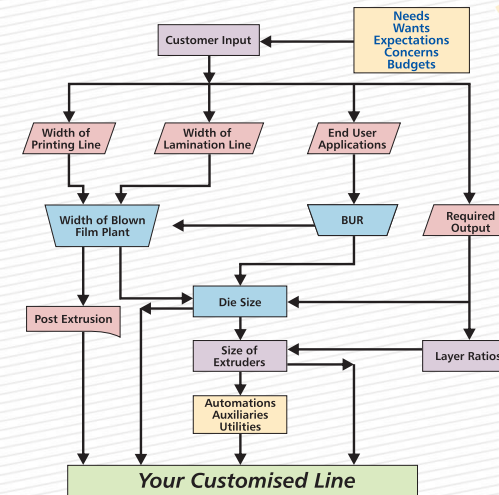
7-Layer POD (All PE Based Structures)

| STRUCTURE | APPLICATION |
|----------------------|---|
| PE-PE-PE-PE-PE-PE-PE | To replace Mono, 2, 3, or 5-Layer POD structures to 7-Layer POD |



APPLICATION BASED CUSTOMISATION

With ever increasing applications of Blown Films for variety of uses and ever increasing competitive pressures, it has become mandatory to derive optimum results from your blown film line. Only way to do this is to critically analyse your requirements and insist on a line configuration that is tailor made for your needs of today and tomorrow.



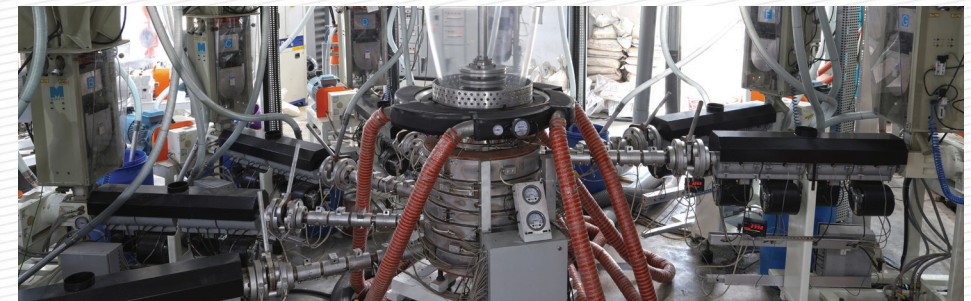
ROAD MAP TO CUSTOMISATION

With over 25 years of experience solely in co-extrusion blown film technology, we can help you critically analyse your needs and deliver a optimal solution that is custom made.

Configure a Line to produce what you want to sell...

MEX BARRIER 5, 7 & 9 LAYER BLOWN FILM LINES

| | Extruder Range (mm) | Die Lip Sizes (mm) | Width Range (mm) | Output Range (Kg/hr) |
|---------------------------------|---------------------|--------------------|------------------|----------------------|
| MEX (POD) 5 / 7 Layer Lines | 40 - 90 | 175 - 600 | 1200 - 2625 | 100 - 600 |
| MEX (Barrier) 5 / 7 Layer Lines | 40 - 90 | 175 - 600 | 1200 - 2625 | 100 - 550 |
| MEX (Barrier) 9 Layer Lines | 40 - 90 | 175 - 500 | 1200 - 2375 | 100 - 550 |



CUSTOMISED CONFIGURATIONS WE OFFER...



Co-extrusion Blown Film Lines

3, 5, 7, 9 Layers & more



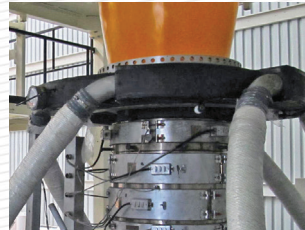
Gravimetric System

- In house manufacturing of Single and Multicomponent
- Complete feeding, Blending and EPC System all in one screen



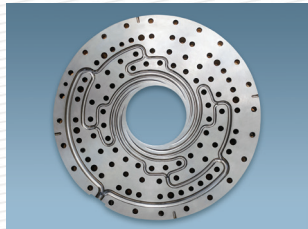
Extruder

- Attains low melt temperature by 10 - 12 °C
- Saves Electricity cost



3 Layer Spiral Mandrel Die

- Taper Lock Assembly Technology
- Faster colour / polymer change
- Precise die gap



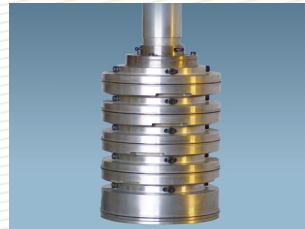
5, 7, 9 Layer Stackable Die

- Temperature isolation between layers
- Faster Flushing, Optimum Pressure, lower residence time
- Individual Layer thickness control due to design



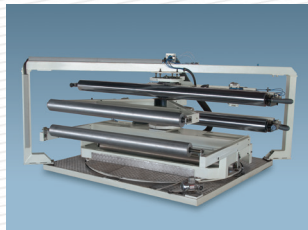
Eliminator Air Ring

- Bubble locking capability
- Higher productivity
- Better thickness control



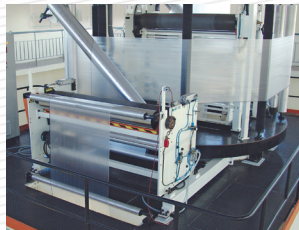
IBC 4+1 Pancake

- Five pre-settable lips
- Progressive cooling possible



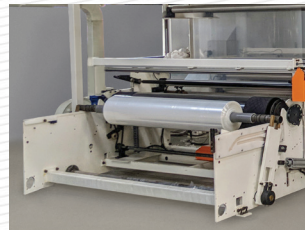
Horizontal Oscillating Haul-Off

- Bottom supported haul off
- Turn bar lock-unlock from control panel
- Better gauge randomisation for wide range of widths



Vertical Oscillating Haul-Off

- Handle thine, tacky and stretchable films
- Additional discharge nip
- Full 360° Oscillation



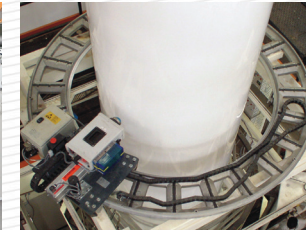
Vegaflex Auto Surface Winders

- Load cell based web tension control
- Automatic reel changeover
- 100 mpm line speed
- 1000 mm maximum roll diameter



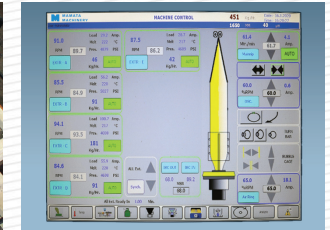
Mexflex Auto Surface Winders

- Taper tension control
- Robotic arm for reel changeover
- 150 mpm line speed
- 1500 mm maximum roll diameter



Thickness Measuring System

- Online rapid and accurate measurement
- Online thickness control



HMI Based Touch Screen Panel

- Single window Controls
- Enhanced Safety
- Monitor performance

PRE-CUSTOMIZED BLOWN FILM LINES FOR YOUR CONVENIENCE

SPECIFICATIONS

| | Winflex 1400 | Winflex 1600 | Vegaflex 1750 | Vegaflex 1950 | Vegaflex Adv. 2200 | Vegaflex Adv. 2200 |
|-----------------------|--------------|--------------|---------------|---------------|--------------------|--------------------|
| Extruder Combinations | 50:50:50 | 50:55:50 | 55:65:55 | 55:75:55 | 65:75:65 | 75:75:75 |
| Line Width (mm) | 1400 | 1600 | 1750 | 1950 | 2200 | 2200 |
| Max. Film Width (mm) | 1300 | 1500 | 1650 | 1850 | 2100 | 2100 |
| Die Size (mm) | 300 | 350 | 375 | 450 | 500 | 500 |
| Max. Output (Kg/hr) | 150 - 180 | 180 - 220 | 260-290 | 310 - 340 | 400 -425 | 500 -530 |

CUSTOMISED 3 LAYER LINES (with IBC System & Line Automations)

| | | | | | | | |
|--------------------------|-----------------------------------|------|------|-------------------------------|------|------|------|
| Width of Line (mm) | 1625 | 1875 | 2125 | 2375 | 2625 | 2875 | 3125 |
| Winder | Surface Winders up to 3000 mm LFW | | | | | | |
| Haul-off | Horizontal Oscillating Haul-off | | | Vertical Oscillating Haul-off | | | |
| Bubble Cage Rollers type | Silicon Sleeve | | | Carbon Fibre Rollers | | | |
| Output Range | 250 - 900 Kg/hr | | | 250 - 900 Kg/hr | | | |

| | | | | | | | |
|---|---|----------------|--------------------|------------|--------------------|-------------------|----------------------------|
| Extruder (mm) | 40 | 50 | 65 | 75 | 90 | 120 | 150 |
| Die & Air Ring | 250 mm to 850 mm at an increment of 25 mm | | | | | | |
| IBC System | 4 + 1 Pancake IBC System with Controls | | | | | | |
| Controls | HMI Type | | | SCADA Type | | | |
| Automations | Gravimetric Blending & Dosing System | | Auto Width Control | | Auto Gauge Control | | Any other as per request |
| Auxiliaries & Ancillaries / Utilities / Panel | Web Guide | Corona Treator | Chiller | | Compressor & Dryer | Testing Equipment | Others as per Requirements |
| Tower | Tower Layout Drawings / Prefabricated Tower | | | | | | |

Note: We can also offer line up-gradation package and complete turnkey solutions from concept to commissioning.